

NASclean®

IGS Gas Filters (for integrated gas panel applications)

NASclean® IGS filters feature Nippon Seisen's unique pleated filter media fabricated in a proprietary process using stainless steel (316L) short fibers. The NASclean® media has a double-layer structure with a membrane with a super-fine pore structure on top of a highly porous support layer which ensures optimal gas displacement and superior dry down properties.

The NASclean® filter media delivers perfect particle retention, and has super-high porosity resulting in excellent flow characteristics and enabling high flow through a compact filter.



Features

- Superior Flow Characteristics
- Excellent Dry down & Gas Displacement Properties
- Perfect particle retention performance
- Compact and Cost Effective

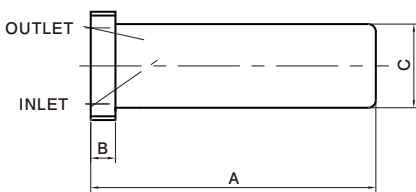
NASclean is trademark of Nippon Seisen.
® Indicate a Nippon Seisen trademark registered in the USA.

Standard Specification

Model	Particle Retention (μm)	Maximum Operating Pressure (MPa)	Maximum Differential Pressure (MPa)	Maximum Operating Temperature (°C)	Material	
					Media	Housing
BF-1.125U-10-M	0.0025	7.2	2.8	460	316L Stainless Steel	316L Stainless Steel
BF-1.125U-30-M	0.0025	4.0	2.8	460		
BF-1.125U-60-M	0.0025	8.6	4.5	460		

※Nickel media is also available.

Dimensions

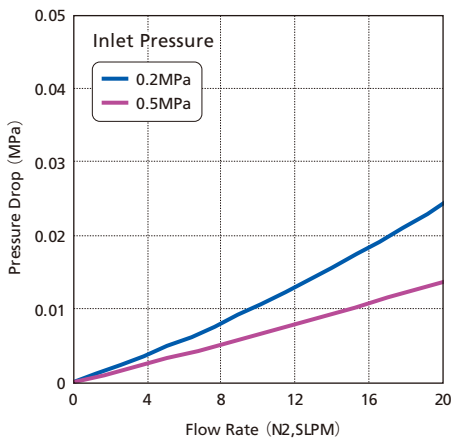


Model	A	B	C
BF-1.125U-10-M	46	6.5	22
BF-1.125U-30-M	75		22
BF-1.125U-60-M	98		27.2

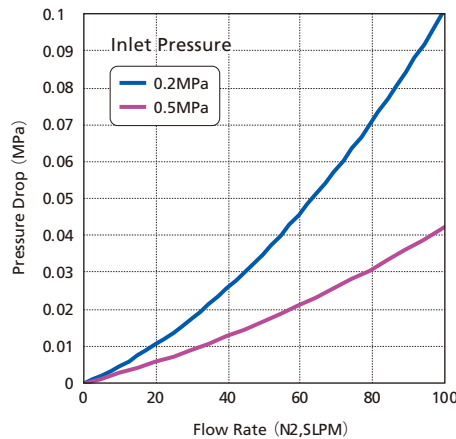
Unit:mm

Flow performance

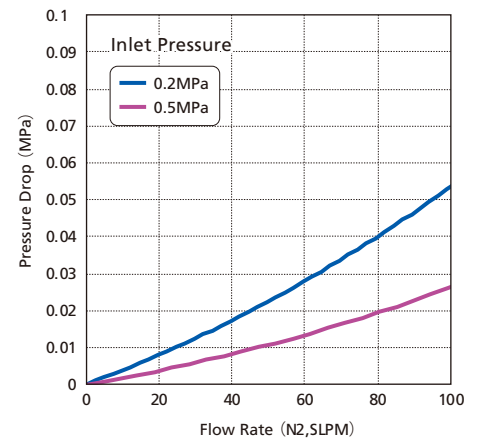
■ BF-1.125U-10-M



■ BF-1.125U-30-M



■ BF-1.125U-60-M



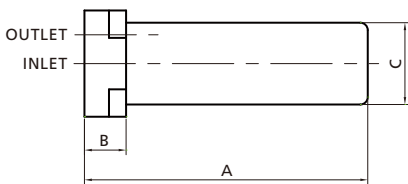
※The data listed in this catalog are representative figures provided under specific conditions.
 Please confirm whether the specifications of the product apply to desired operating conditions.
 ※Nippon Seisen makes no guarantee regarding the applicability of its filters or fitness for particular applications.
 The specifications of the product are subject to change without notice.
 ※Please contact Nippon Seisen with any questions.

Standard Specification

Model	Particle retention (µm)	Maximum Operating Pressure (MPa)	Maximum Differential Pressure (MPa)	Maximum Operating Temperature (°C)	Material	
					Media	Housing
BF-1.125C-5-M	0.0025	4.0	2.8	460	316L Stainless Steel	316L Stainless Steel
BF-1.125C-30SLM	0.0025	4.0	2.8	460		
BF-1.125C-50SLM	0.0025	10.6	4.5	460		

※The material of media except the 316L stainless steel is available.

Dimensions

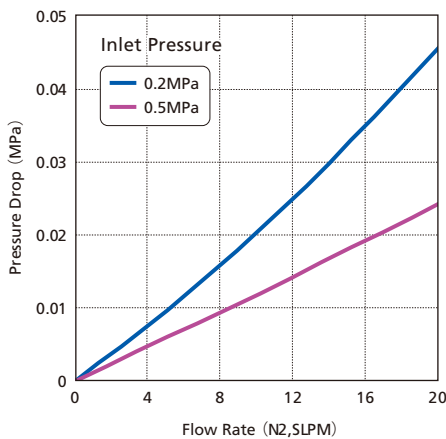


Unit: mm

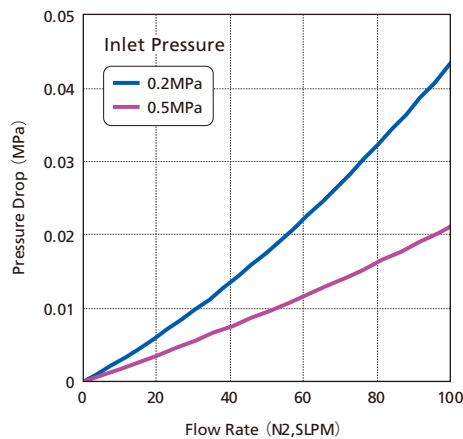
Model	A	B	C
BF-1.125C-5-M	36.7	11.2	22
BF-1.125C-30SLM	76.2	11.2	22
BF-1.125C-50SLM	98.1	6.6	27.2

Flow performance

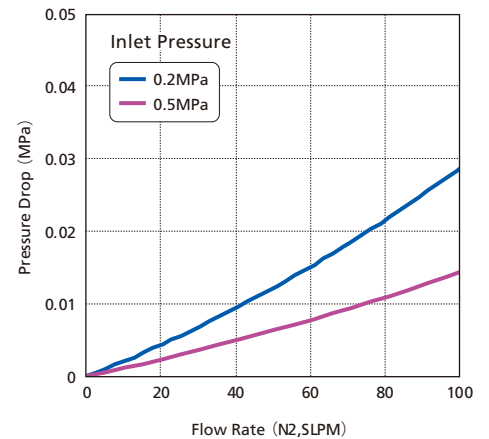
■ BF-1.125C-5-M



■ BF-1.125C-30SLM



■ BF-1.125C-50SLM



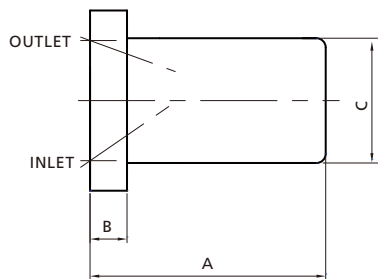
※The data listed in this catalogue are representative figures provided under specific requirements.
 Please confirm whether the specifications of the product adapt to operating condition.
 ※Nippon Seisen do not guarantee about the merchantability of filter or fitness for particular purpose.
 The specifications of the product have a case to change without a notice.
 ※Please refer for any questions to us.

Standard Specification

Model	Particle retention (μm)	Maximum Operating Pressure (MPa)	Maximum Differential Pressure (MPa)	Maximum Operating Temperature (°C)	Material	
					Media	Housing
BF-1.5U-10-M	0.0025	4.8	4.5	460	316L Stainless Steel	316L Stainless Steel
BF-1.5U-30-M	0.0025	4.8	4.5	460		
BF-1.5U-60-M	0.0025	4.8	4.5	460		

※The material of media except the 316L stainless steel is available.

Dimensions

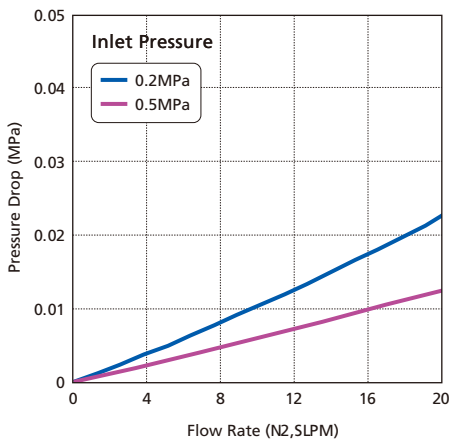


Model	A	B	C
BF-1.5U-10-M	41	8	27
BF-1.5U-30-M	51	8	27
BF-1.5U-60-M	69	8	27

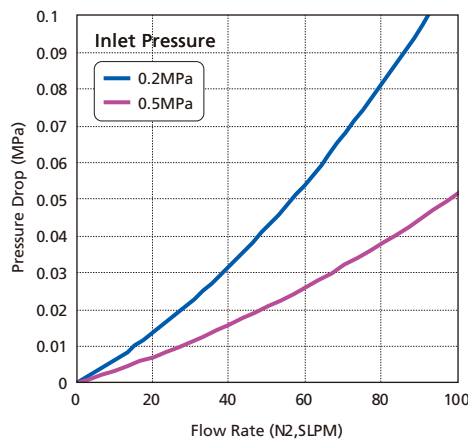
Unit:mm

Flow performance

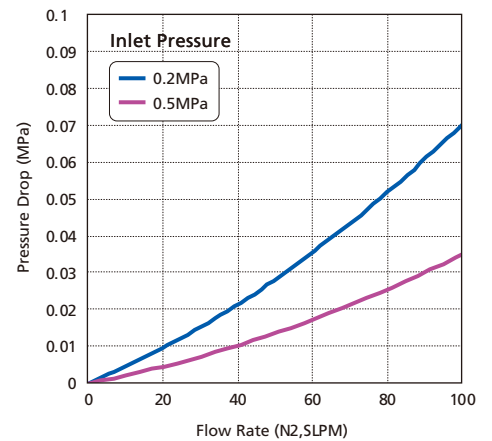
BF-1.5U-10-M



BF-1.5U-30-M



BF-1.5U-60-M



※The data listed in this catalogue are representative figures provided under specific requirements.
 Please confirm whether the specifications of the product adapt to operating condition.
 ※Nippon Seisen do not guarantee about the merchantability of filter or fitness for particular purpose.
 The specifications of the product have a case to change without a notice.
 ※Please refer for any questions to us.